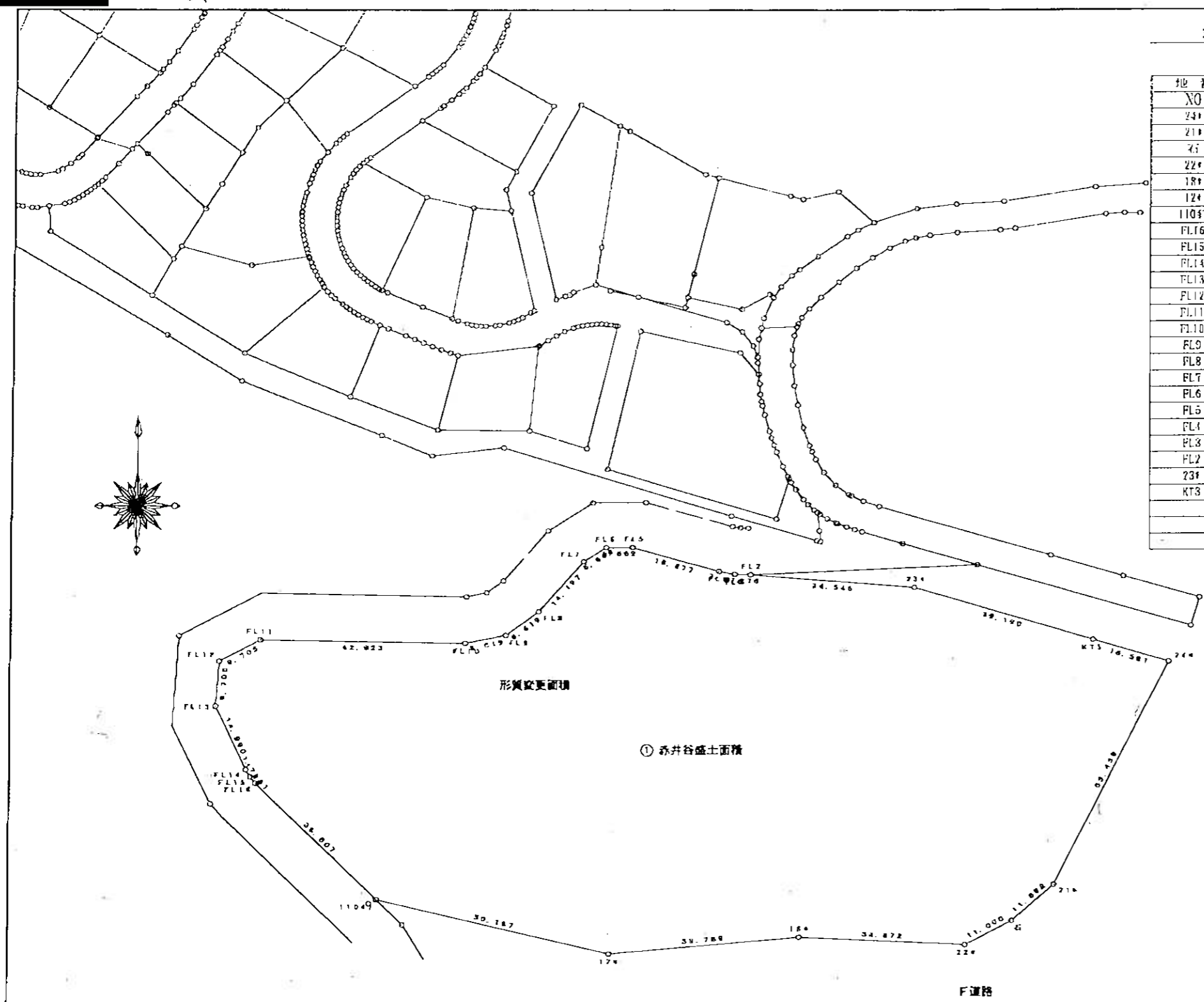


赤井谷盛土

求積表

地番	① 赤井谷盛土面積			
NO	$X_n$	$Y_n$	$Y_{n+1} - Y_{n-1}$	$X_n \cdot (Y_{n+1} - Y_{n-1})$
24*	-61.313	-191.788	-8.196	527.117544
21*	-112.010	-215.887	-32.749	3668.215490
25	-119.717	-224.537	-18.388	2201.264256
22*	-124.828	-231.275	-44.574	5541.052722
18*	-193.233	-269.111	-74.475	9177.852150
12*	-126.681	-308.750	-88.473	11207.848113
11047	-115.105	-357.584	-74.268	8518.618140
FL16	-90.186	-383.018	-20.590	2398.045740
FL15	-88.831	-384.171	-2.058	182.370043
FL14	-87.293	-385.071	-7.269	634.532817
FL13	-73.725	-391.443	-5.715	421.338375
FL12	-64.042	-390.788	9.221	-590.531282
FL11	-59.478	-382.227	51.481	-3061.883056
FL10	-60.203	-339.305	51.364	-3092.266892
FL9	-58.488	-330.858	13.388	-900.013314
FL8	-53.378	-323.017	16.202	-869.634376
FL7	-42.806	-314.566	14.040	-599.451840
FL6	-39.693	-309.877	10.258	-407.170794
FL5	-38.663	-304.308	23.727	-941.084001
FL4	-44.823	-286.150	21.372	-957.957156
FL3	-45.458	-282.936	6.488	-294.937601
FL2	-45.559	-279.662	37.710	-1718.079890
23*	-48.316	-245.226	71.971	-3477.350835
KT3	-59.585	-207.691	53.438	-3184.103230
合計				24436.876839
合計面積				12218.4384105
地積				12218.43 m <sup>2</sup>

地番	面積
① 赤井谷盛土面積	12218.4384105 m <sup>2</sup>



赤井谷盛土求積図 縮尺1:1000  
H21年11月27日作成